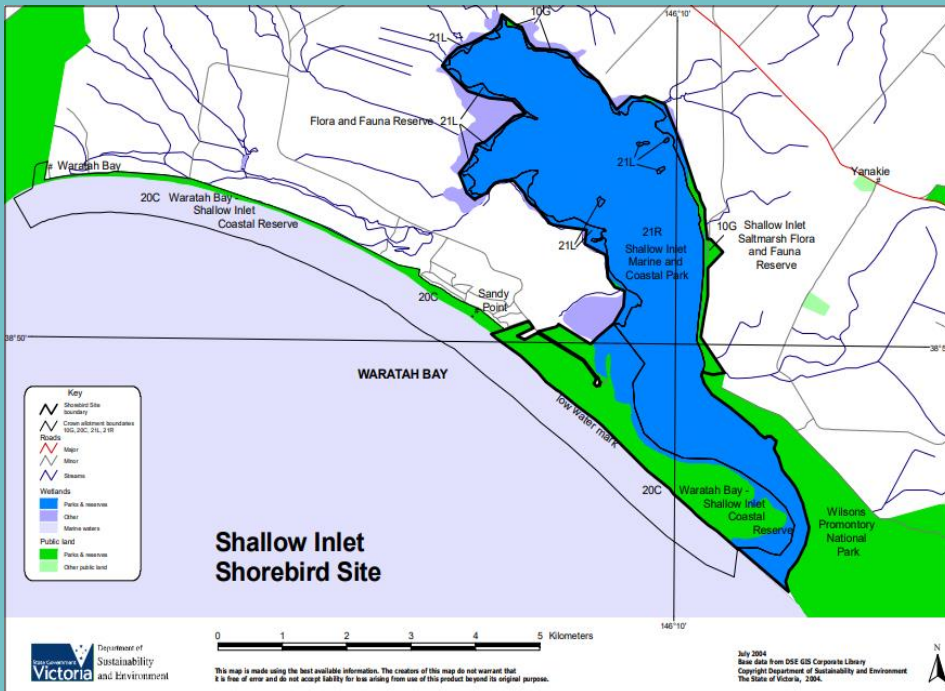


The significance of Shallow Inlet and the sandspit



The significance of Shallow Inlet and the sandspit

Shallow Inlet Marine and Coastal Park (designated in April 1986) is an internationally significant site for migratory shorebirds. Five birds are registered on the Australasian Site Network (counting is shared with an international database) for Shallow Inlet; whereby greater than 1% of the population inhabits the site each year. These recognised birds are:

- Eastern Curlew (critically endangered)
- Double banded plover
- Red-necked stint
- Curlew Sandpiper
- Sanderling

There have been 180 different species of birds sighted at Shallow Inlet and 22 migratory species visit the area each year. Some stay as long as 9 months.





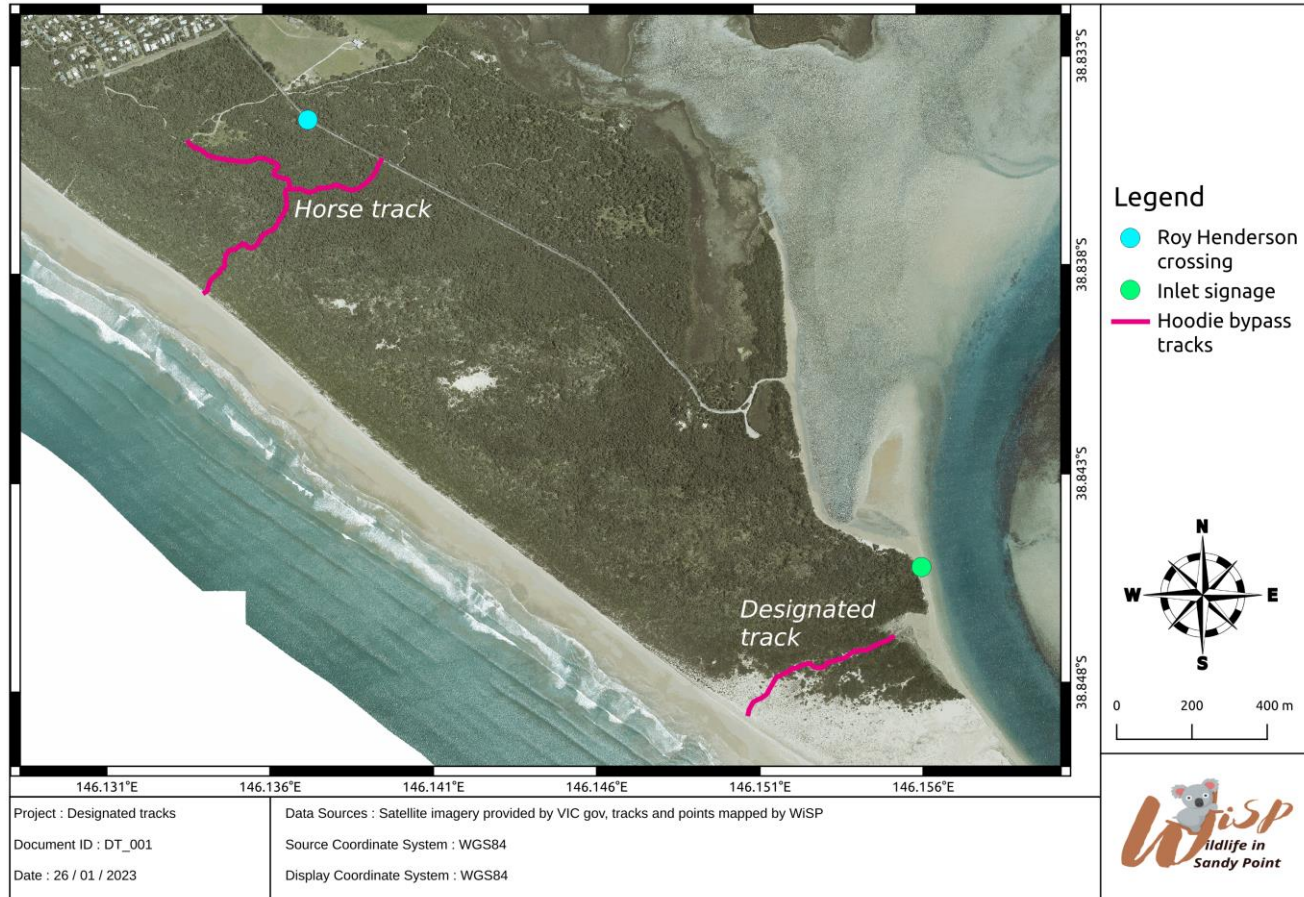


HOW CAN WE HELP THEM?



Use the bypass tracks

Designated tracks for Hooded Plover Protection



KEEP CLEAR OF FENCED AREAS

Please Keep Clear Sensitive Shorebird Nesting Area

To prevent stepping on the nest of a beach-nesting bird, and to reduce disturbance to adult birds, who won't sit on their eggs if you come too close, please:



- Walk near the water's edge
- Do not remain or sit in front of the area
- Do not enter the signed area or sand dunes
- Keep your dog leashed and away from the area

Thank you for your cooperation

For information:
www.birdsaustralia.com.au/projects/beach_nesting.html



WALK AT LOW TIDE IN THE MIDDLE OF THE BEACH



WALK YOUR DOG ON A LEAD





**DO NOT WALK OR PLAY IN THE
DUNES**

BEFORE YOU SETTLE IN A SPOT, LOOK AROUND FOR SHOREBIRDS



IF YOU SEE THEM, GIVE THEM SPACE!





Shallow Inlet Marine and Coastal Park Migratory Shorebird Action Plan Recommends

- Monitor and increase knowledge about the Shorebirds visiting and living in the Park
- Reduce human based threats

WiSP sees its role as promoting information about our significance and to help fill some of the monitoring voids where it can with volunteers. WiSP collaborates with Birdlife Australia in its activities and communication regarding Shorebirds. Several of our members are Birdlife volunteers.

(The SIMS Action Plan was made possible by the Helen MacPherson Smith Trust and was produced by Birdlife)